

The Endocrine System

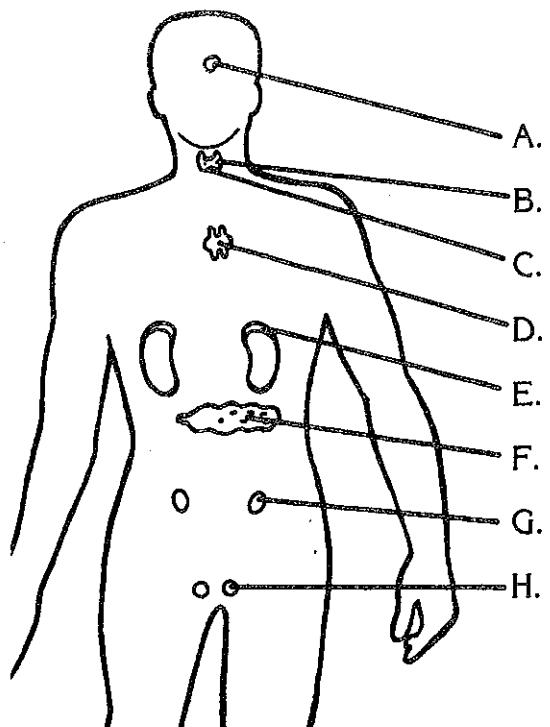
Gland	Function
adrenal	regulates salt and water in the blood; assists body in meeting emergencies; functions in the development of sex characteristics
islands of Langerhans	regulates storage of sugar in body
ovaries (female)	affect the formation of eggs and development of adult female sex characteristics
parathyroid	regulates metabolism of calcium and phosphates
pituitary	regulates growth and controls functions of other glands
testes (male)	affect the formation of sperms and development of adult male sex characteristics
thymus	aids in the formation of antibodies
thyroid	controls rate of body's metabolism and influences growth and development

Use the information in the above chart to complete each of the following statements.

1. The _____ gland is often referred to as the master gland.
2. The hormones from the _____ gland aid in the body's defense against infections.
3. When the body is under stress, the hormones from the _____ gland help meet the emergency.
4. The _____ produce insulin, which regulates glucose in the body.
5. Hormones from the _____ cause a young male's voice to become deeper.
6. Secretions of the _____ control the level of calcium in the bloodstream.
7. The rate of metabolism is regulated by the secretions from the _____ gland.
8. Hormones from the _____ influence the development of the adult sex characteristics of young women.

The Endocrine System

The endocrine glands are glands that secrete hormones directly into the bloodstream.



Name of Gland	Hormone
_____	ACTH
_____	thyroxin
_____	parathormone
_____	not certain
_____	cortisone
_____	insulin
_____	estrogen
_____	testosterone

1. Label the endocrine glands indicated in the drawing above.
2. Complete the chart by using the information from the drawing.

Gland	Location in the Body	Hormone
	lower region of neck	thyroxin
thymus		
		estrogen
	on top of the kidneys	
testes		
	base of brain	
		parathormone
	specialized cells in pancreas	