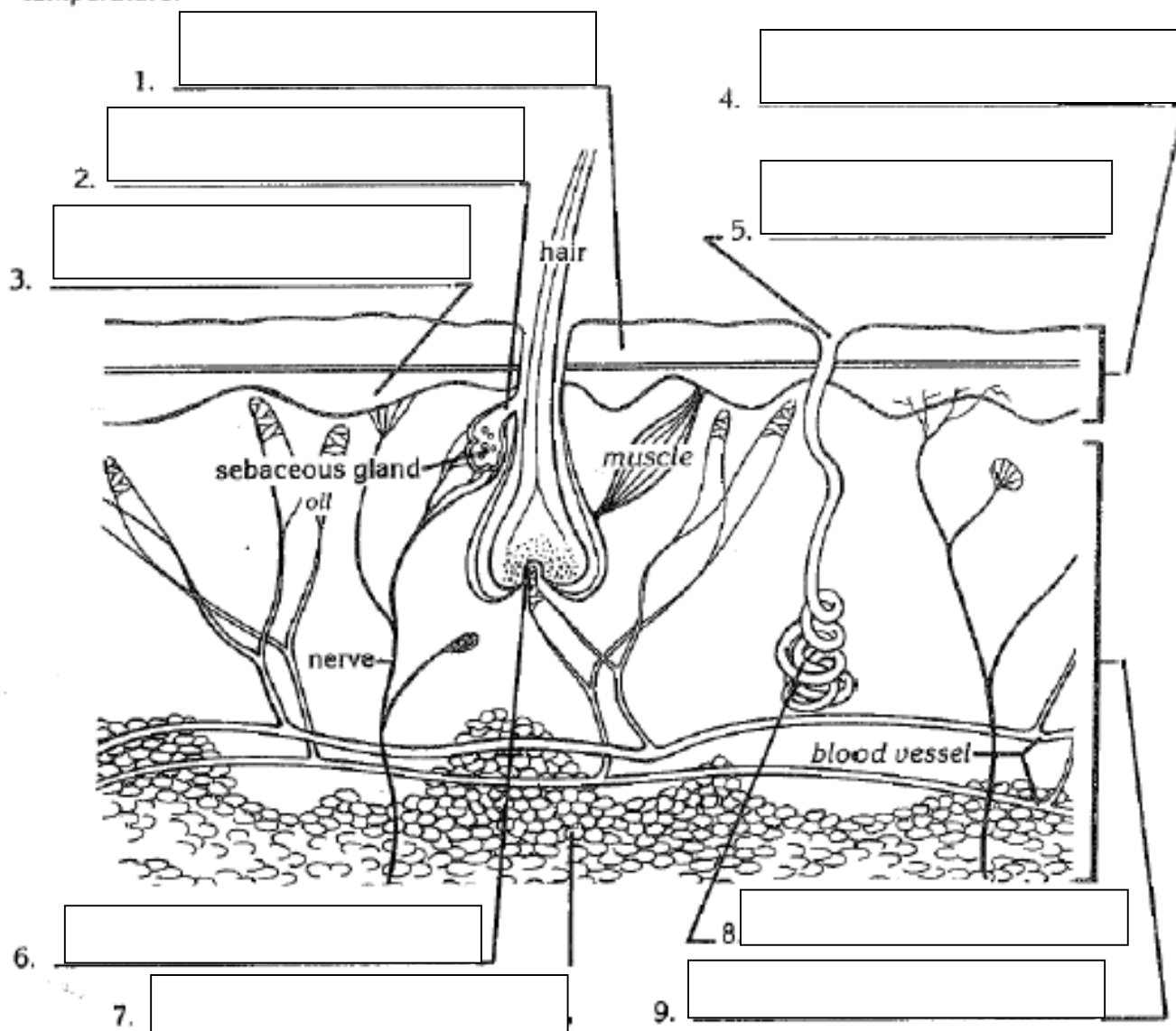


The Skin

The skin provides the body with protection, sensory reception, and the regulation of temperature.



A. Locate and label the following in the drawing above:

growth layer sweat gland dead cells hair follicle subcutaneous tissue (fat)
 dermis oil gland epidermis pore

B. Complete each sentence with a word that will make the sentence a true statement.

1. There is one _____ in each hair follicle.
2. The growth layer is in the division of the skin called the _____.
3. Sebaceous or _____ glands help keep skin soft and hair lustrous.
4. The deepest and most active division of skin is called the _____.