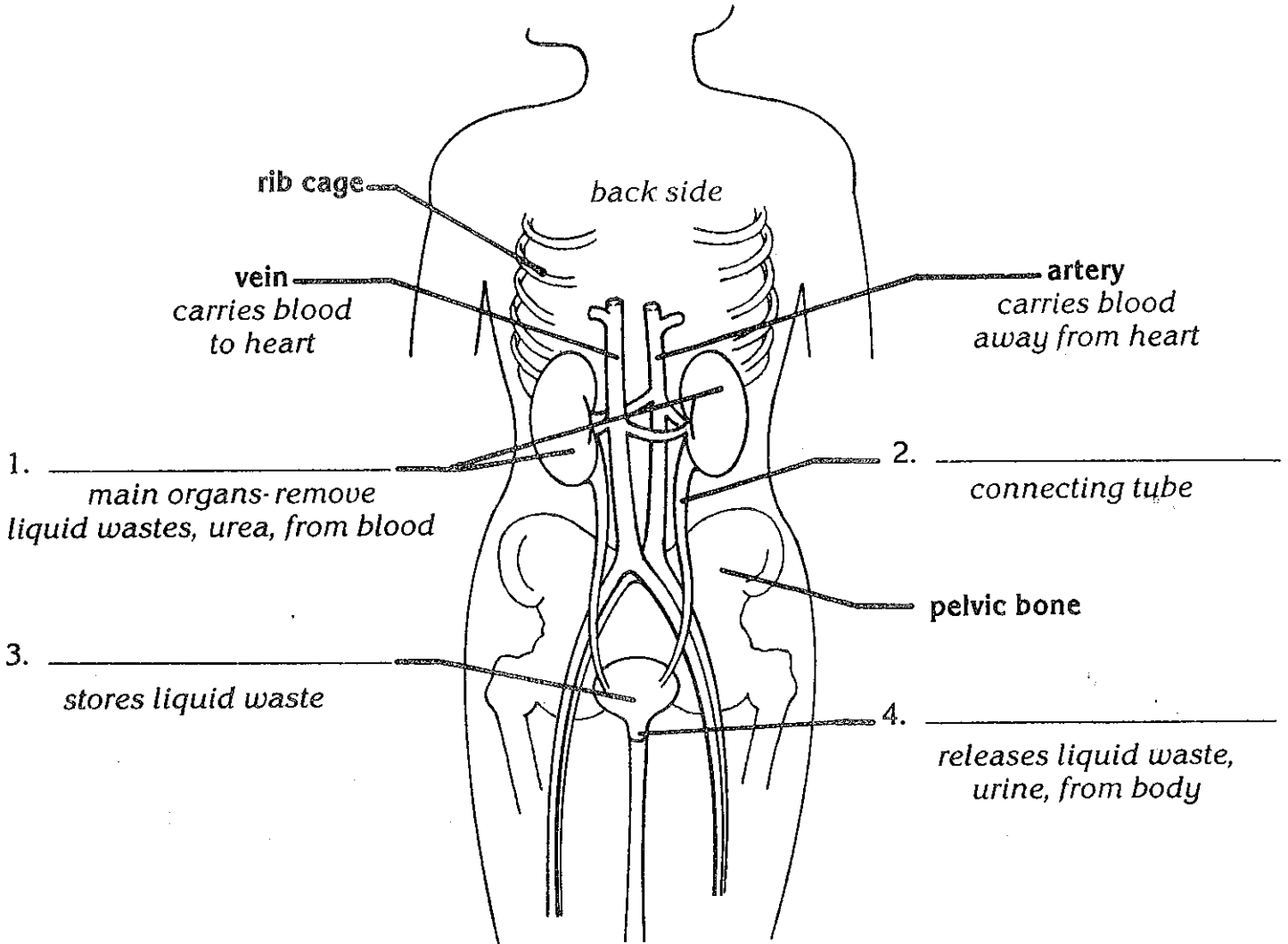


# The Excretory System

The excretory system removes wastes from the body.



- A. Locate and label these parts of the excretory system in the drawing above:
- |         |         |        |         |
|---------|---------|--------|---------|
| bladder | kidneys | ureter | urethra |
|---------|---------|--------|---------|
- B. Match the words in Column 2 with the definitions in Column 1. Write the letter of the word in the space provided.

## Column 1

1. \_\_\_\_\_ tubes connecting kidneys and bladder
2. \_\_\_\_\_ main filters of waste from blood
3. \_\_\_\_\_ liquid waste
4. \_\_\_\_\_ where liquid waste is stored
5. \_\_\_\_\_ liquid waste found in bloodstream
6. \_\_\_\_\_ where liquid waste is released from body

## Column 2

- a. urea
- b. urethra
- c. bladder
- d. urine
- e. ureter
- f. kidneys

# Our Excretory (Urinary) System

Your Name \_\_\_\_\_

Today's Date \_\_\_\_\_



**A.** After studying the blood cycle, show how much you remember by numbering the following statements **1 to 6**, according to the order in which they occur. **Number 1** is done for you.

- \_\_\_\_\_ Kidneys filter out waste from the blood.
- \_\_\_\_\_ Blood carries waste to the liver.
- \_\_\_\_\_ Filtered blood is carried back to the rest of the body.
- 1   Waste is created in body cells.
- \_\_\_\_\_ The liver changes waste into urea.
- \_\_\_\_\_ Urea is delivered from the liver to the kidneys.

**B.** After learning about the kidneys and the urinary system, write whether each of the following statements is **true** or **false**.

- \_\_\_\_\_ 1. Most people have two kidneys.
- \_\_\_\_\_ 2. Kidneys are tiny organs, about the size of a peanut.
- \_\_\_\_\_ 3. Kidneys filter urea from the blood.
- \_\_\_\_\_ 4. Urine travels from the kidneys to the bladder.
- \_\_\_\_\_ 5. The ureters carry urine to the kidneys.
- \_\_\_\_\_ 6. Urinary system and excretory system mean the same thing.

**C. Reviewing the Body Systems:** How well do you know your **INS** and **OUTS**? Write whether each of the missing words should be **into** or **out of**.

- 1. Urine travels \_\_\_\_\_ the kidneys, before it goes \_\_\_\_\_ the bladder where it is temporarily stored.
- 2. Blood gets pumped \_\_\_\_\_ the heart by way of the arteries and \_\_\_\_\_ the heart by way of the veins.
- 3. Nutrients get transferred \_\_\_\_\_ the blood system by the villi.
- 4. Waste in the form of urea gets carried \_\_\_\_\_ the kidneys by the blood, and then cleaned blood travels \_\_\_\_\_ the blood stream again.
- 5. Before blood goes \_\_\_\_\_ the liver, it has no urea. After the blood goes \_\_\_\_\_ the liver, its next stop is the kidneys.
- 6. After being stored, the last thing urine does is go \_\_\_\_\_ our bodies by going \_\_\_\_\_ the bladder.